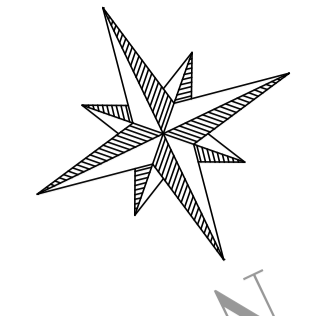


← RIO DO BRAÇO ←



0 5000 10000

LEGENDA

- COISA DO TERREIRO
COTA DO TERREIRO
- BOCA DE LOBO SIMPLES
C/ TAMPA DE CONCRETO
ABERTURA NO MEIO FIO
- GALERIA PROJETADA
- FLUXO DE DRENAGEM EXISTENTE
VALA / RIO EXISTENTE
- CADASTRO - CONSTRUÇÕES
EXISTENTES
- POSTE EXISTENTE
- ALA SAÍDA DE BUEIRO

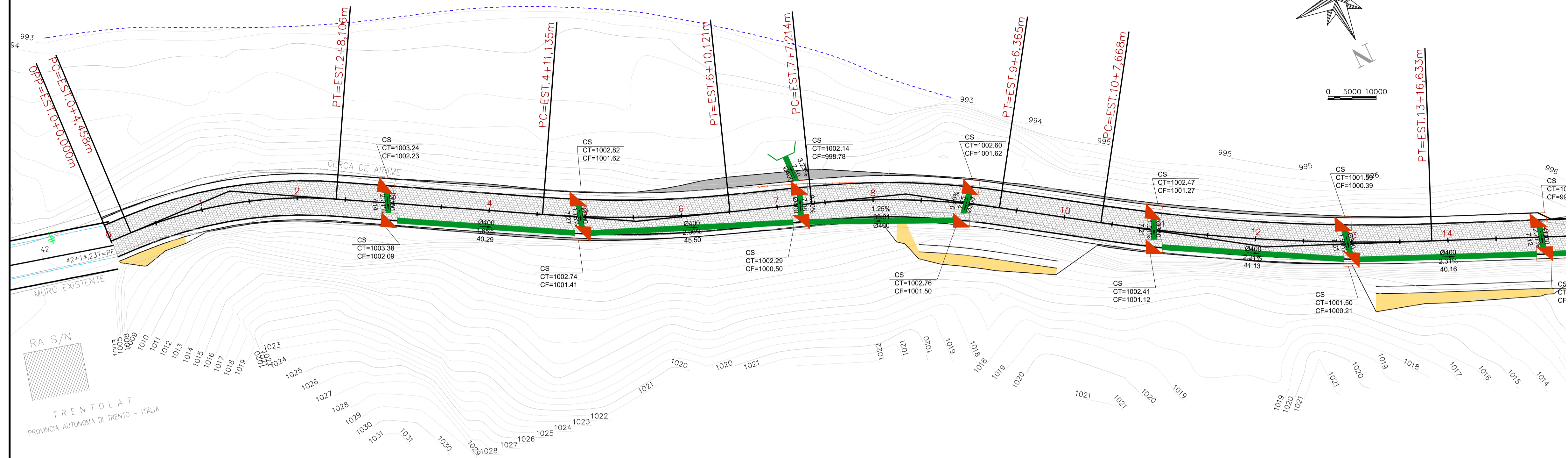
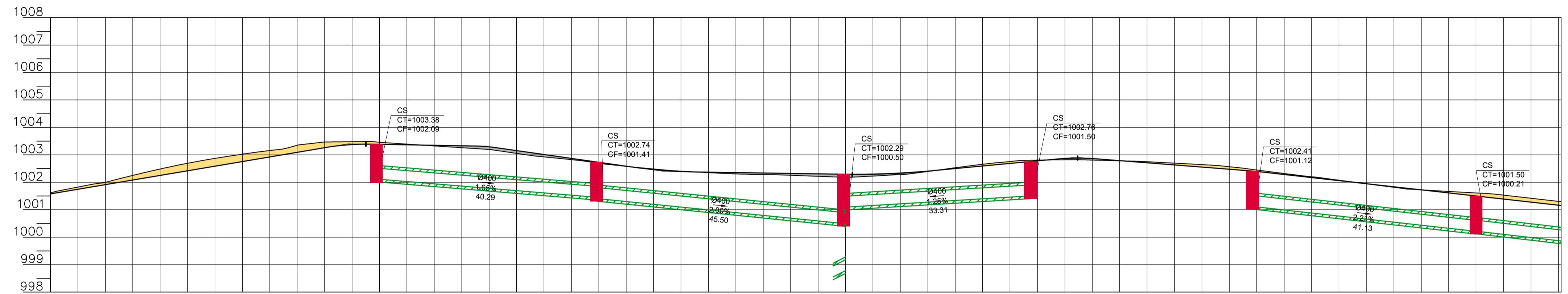


TABELA DE ESTRUTURAS DA REDE DE DRENAGEM

NOME	COTAS	PROFUNDIDADE (m)
CS-EST. 99.45	CT=1003.38 CF=1002.23	1.27
CS-EST. 98.27	CT=1003.24 CF=1002.23	1.01
CS-EST. 98.36	CT=1002.82 CF=1001.50	1.30
CS-EST. 178.74	CT=1002.78 CF=1001.50	1.28
CS-EST. 99.60	CT=1002.60 CF=1001.62	1.28
CS-EST. 817.56	CT=1002.61 CF=1001.41	1.28
CS-EST. 819.61	CT=1002.61 CF=1001.62	1.30
CS-EST. 180.00	CT=1002.60 CF=1001.62	0.97
CS-EST. 218.28	CT=1002.27 CF=1001.50	1.20
CS-EST. 219.23	CT=1002.41 CF=1001.12	1.29
CS-EST. 144.66	CT=1002.29 CF=1001.50	1.70
CS-EST. 780.59	CT=1002.29 CF=1001.50	1.96
CS-EST. 781.73	CT=1002.24 CF=1001.50	1.19
CS-EST. 144.98	CT=1002.14 CF=1001.50	1.76
CS-EST. 880.32	CT=1002.07 CF=999.50	2.44
CS-EST. 880.23	CT=1002.08 CF=999.75	2.29
CS-EST. 388.16	CT=1001.59 CF=1000.38	1.20
CS-EST. 380.00	CT=1001.50 CF=1000.21	1.29
CS-EST. 740.00	CT=1000.96 CF=999.77	1.19
CS-EST. 733.76	CT=1000.71 CF=999.13	1.56
CS-EST. 300.00	CT=1000.61 CF=999.21	1.30
CS-EST. 288.94	CT=1000.48 CF=998.47	1.01
CS-EST. 640.00	CT=1000.13 CF=998.62	1.30
CS-EST. 677.38	CT=1000.07 CF=998.24	1.84
CS-EST. 638.57	CT=1000.03 CF=998.81	1.22
CS-EST. 750.00	CT=1000.00 CF=998.80	1.20
CS-EST. 327.28	CT=999.90 CF=998.75	1.30
CS-EST. 699.63	CT=999.88 CF=998.51	1.44
CS-EST. 328.18	CT=999.80 CF=998.52	1.41
CS-EST. 676.33	CT=999.50 CF=998.28	1.85
CS-EST. 600.00	CT=999.52 CF=998.50	1.02
CS-EST. 669.72	CT=999.48 CF=998.44	1.01
CS-EST. 660.10	CT=999.20 CF=998.21	1.19
CS-EST. 659.80	CT=999.10 CF=997.33	1.82
CS-EST. 659.96	CT=999.00 CF=997.83	1.20
CS-EST. 380.00	CT=998.99 CF=997.47	1.50
CS-EST. 620.71	CT=998.74 CF=997.50	1.19
CS-EST. 620.00	CT=998.59 CF=997.78	1.91
CS-EST. 481.23	CT=998.31 CF=997.12	1.19
CS-EST. 303.85	CT=998.29 CF=996.40	1.85
CS-EST. 480.20	CT=998.25 CF=996.30	1.92
CS-EST. 382.80	CT=998.23 CF=996.21	1.97
CS-EST. 448.68	CT=998.21 CF=996.16	2.05
CS-EST. 424.20	CT=998.17 CF=996.30	2.27
CS-EST. 427.28	CT=998.13 CF=996.28	2.07
CS-EST. 482.24	CT=998.04 CF=997.03	1.00



ESTACAS	COTAS TERRENO	COTAS PROJETO
0+0,000	1001,579	1001,616
0+4,458	1001,729	1001,805
0+5,000	1001,916	1001,997
0+15,000	1002,252	1002,484
1+5,000	1002,463	1002,741
1+6,282	1002,668	1002,871
1+15,000	1002,924	1003,158
2+5,000	1003,197	1003,426
2+8,106	1003,260	1003,469
2+15,000	1003,382	1003,457
3+5,000	1003,348	1003,324
3+15,000	1003,293	1003,200
4+5,000	1003,014	1002,925
4+11,135	1002,982	1002,903
4+15,000	1002,730	1002,694
5+5,000	1002,463	1002,495
5+10,628	1002,371	1002,351
5+15,000	1002,339	1002,283
6+5,000	1002,307	1002,218
6+10,121	1002,291	1002,197
6+15,000	1002,299	1002,226
7+5,000	1002,407	1002,393
7+7,214	1002,533	1002,577
7+15,000	1002,593	1002,656
8+5,000	1002,782	1002,808
8+5,789	1002,880	1002,823
8+15,000	1002,866	1002,809
9+5,000	1002,710	1002,750
9+15,000	1002,690	1002,670
10+5,000	1002,554	1002,644
10+15,000	1002,393	1002,448
11+5,000	1002,170	1002,199
11+15,000	1001,847	1001,946
12+2,150	1001,899	1001,890
12+5,000	1001,724	1001,725
12+15,000	1001,501	1001,611
13+5,000	1001,278	1001,419
13+15,000	1001,155	1001,293

TABELA DE TUBOS DA REDE DE DRENAGEM

TUBO	DN (m)	COMPRIMENTO (m)	DECLIVIDADE (%)
BSTC DN 0.40M CONCRETO - EST. 867.23	0.40	7.594	1.39%
BSTC DN 0.40M CONCRETO - EST. 869.32	0.40	5.422	2.00%
BSTC DN 0.40M CONCRETO - EST. 817.55	0.40	37.399	2.84%
BSTC DN 0.40M CONCRETO - EST. 780.59	0.40	47.617	2.39%
BSTC DN 0.40M CONCRETO - EST. 733.76	0.40	35.038	1.77%
BSTC DN 0.40M CONCRETO - EST. 699.63	0.40	22.322	0.50%
BSTC DN 0.40M CONCRETO - EST. 59.45	0.40	40.287	1.68%
BSTC DN 0.40M CONCRETO - EST. 99.60	0.40	45.496	1.90%
BSTC DN 0.40M CONCRETO - EST. 178.74	0.40	33.306	1.25%
BSTC DN 0.40M CONCRETO - EST. 219.23	0.40	41.135	2.21%
BSTC DN 0.40M CONCRETO - EST. 260.00	0.40	40.155	2.22%
BSTC DN 0.40M CONCRETO - EST. 300.00	0.40	28.182	2.85%
BSTC DN 0.40M CONCRETO - EST. 328.18	0.40	32.052	3.23%
BSTC DN 0.40M CONCRETO - EST. 360.00	0.40	33.847	2.57%
BSTC DN 0.40M CONCRETO - EST. 638.57	0.40	39.306	2.03%
BSTC DN 0.40M CONCRETO - EST. 600.00	0.40	40.606	1.58%

TABELA DE TUBOS DA REDE DE DRENAGEM

TUBO	DN (m)	COMPRIMENTO (m)	DECLIVIDADE (%)
BSTC DN 0.40M CONCRETO - EST. 559.80	0.40	39.801	1.39%
BSTC DN 0.40M CONCRETO - EST. 520.00	0.40	40.028	1.13%
BSTC DN 0.40M CONCRETO - EST. 480.20	0.40	31.544	0.50%
BSTC DN 0.40M CONCRETO - EST. 448.68	0.40	21.646	0.50%
BSTC DN 0.40M CONCRETO - EST. 144.66	0.40	7.082	2.00%
BSTC DN 0.40M CONCRETO - EST. 144.98	0.40	7.102	2.00%
BSTC DN 0.80M CONCRETO - EST. 393.85	0.80	7.194	2.00%
BSTC DN 0.80M CONCRETO - EST. 392.80	0.80	5.977	2.00%
BSTC DN 0.60M CONCRETO - EST. 427.28	0.60	7.987	2.00%
BSTC DN 0.60M CONCRETO - EST. 424.20	0.60	6.718	2.00%
BSTC DN 0.60M CONCRETO - EST. 677.38	0.60	7.099	2.00%
BSTC DN 0.60M CONCRETO - EST. 676.33	0.60	5.016	2.00%
BSTC DN 0.30M CONCRETO - EST. 819.61	0.30	7.452	0.57%
BSTC DN 0.30M CONCRETO - EST. 781.73	0.30	7.241	9.93%
BSTC DN 0.30M CONCRETO - EST. 740.00	0.30	9.497	6.30%
BSTC DN 0.30M CONCRETO - EST. 700.00	0.30	7.271	3.46%

TABELA DE TUBOS DA REDE DE DRENAGEM

TUBO	DN (m)	COMPRIMENTO (m)	DECLIVIDADE (%)
BSTC DN 0.30M CONCRETO - EST. 640.00	0.30	7.375	0.95%
BSTC DN 0.30M CONCRETO - EST. 599.72	0.30	7.031	6.46%
BSTC DN 0.30M CONCRETO - EST. 560.10	0.30	7.178	8.40%
BSTC DN 0.30M CONCRETO - EST. 520.71	0.30	7.207	10.23%
BSTC DN 0.30M CONCRETO - EST. 481.23	0.30	7.178	10.42%
BSTC DN 0.30M CONCRETO - EST. 452.24	0.30	7.866	11.07%
BSTC DN 0.30M CONCRETO - EST. 359.58	0.30	7.165	4.95%
BSTC DN 0.30M CONCRETO - EST. 327.29	0.30	7.427	2.70%
BSTC DN 0.30M CONCRETO - EST. 298.94	0.30	7.121	2.32%
BSTC DN 0.30M CONCRETO - EST. 258.16	0.30	7.613	1.80%
BSTC DN 0.30M CONCRETO - EST. 218.29	0.30	7.211	1.44%
BSTC DN 0.30M CONCRETO - EST. 180.00	0.30	7.148	0.50%
BSTC DN 0.30M CONCRETO - EST. 98.36	0.30	7.266	1.71%
BSTC DN 0.30M CONCRETO - EST. 58.27	0.30	7.139	1.56%

DRENAGEM PLUVIAL

MUNICÍPIO NOVA TRENTO - SC

OBRA	CONTEÚDO
RUA JOSÉ BATTISTI ARCHER	PROJETO DE DRENAGEM PLUVIAL PERFIL LONGITUDINAL DE DRENAGEM
PROJETO	APROVAÇÃO DA PREFEITURA
VINÍCIUS FELLER Engenheiro Civil CREA/SC 147.982-3	

REVISÃO	DATA	FRANCHA
VERSÃO INICIAL	SET/19	01/04

ASSOCIAÇÃO DOS MUNICÍPIOS DA REGIÃO DA GRANDE FLORIANÓPOLIS "GRANFPOLIS" ASSESSORIA DE ENGENHARIA E ARQUITETURA